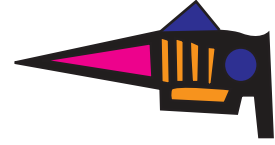


Cut the pattern by following the outline.

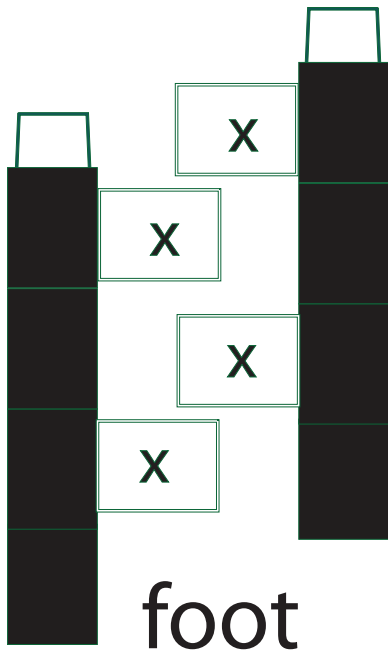
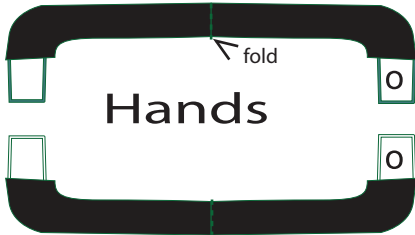
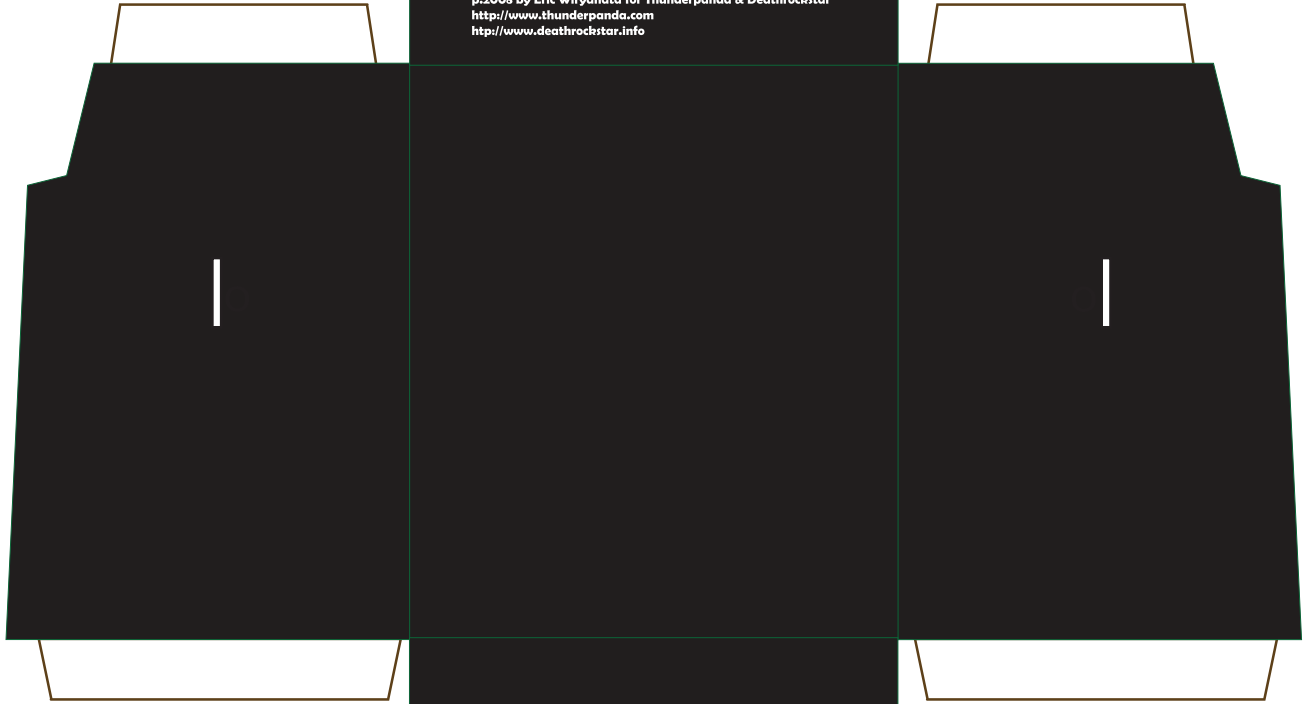
Fold the pattern by following the line too.

Glue on the white area.

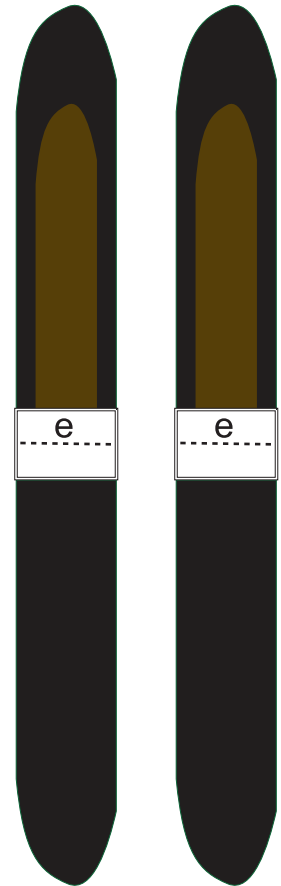
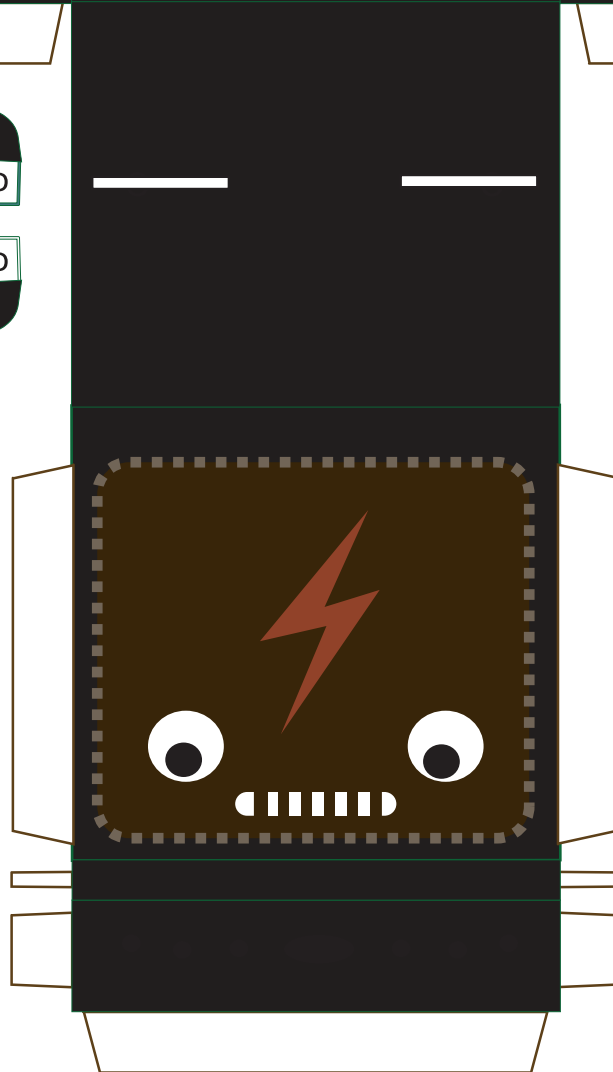
And snap together the body parts to the body, check the code, snap 'e' to the 'e' and snap 'o' to the 'o' and so on.



p.2008 by Eric Wiryanata for Thunderpanda & Deathrockstar  
<http://www.thunderpanda.com>  
<http://www.deathrockstar.info>



foot



Ears